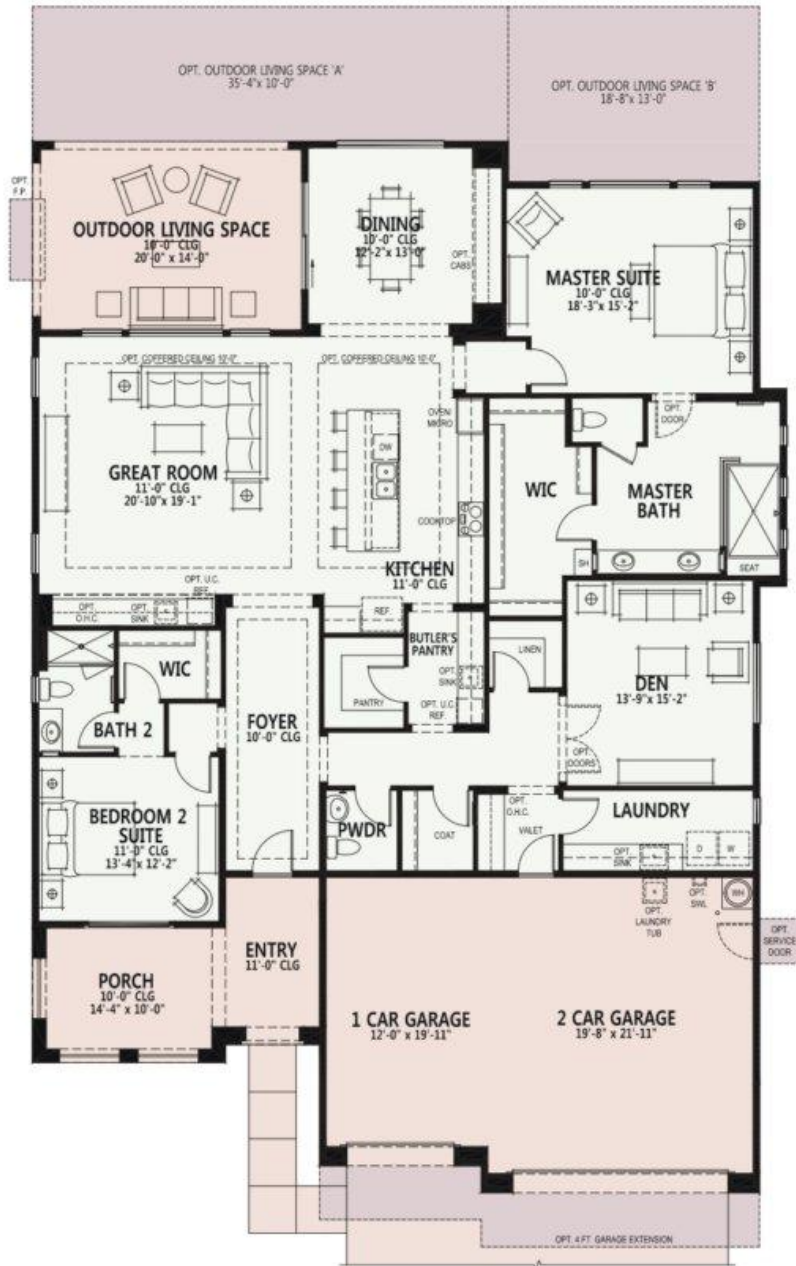


Avalon 2,695 sq. ft.

The Preserve at SaddleBrooke



- 2 Bedroom Suites, 2 Baths
- Powder Room
- Great Room
- Dining Room
- Grand Kitchen Island
- Butler's Pantry
- Spacious Den
- Master Bath No Step 48" x 84" Walk-in Shower
- Generous Walk-in Closet in Master Suite
- Walk-in Closet in Bedroom 2 Suite
- Laundry Room
- Owners Entry Valet with Cabinets
- 9', 10' & 11' Ceiling Heights
- Deep 3-Car Garage
- 280 sq. ft. of Covered Outdoor Living Space
- Front Porch with Selected Elevations
- Optional Bedroom 3 Suite
- Optional Guest Suite and Sitting Room
- Optional Office
- Optional Expanded Den
- Optional Expanded Laundry
- Optional Dog Wash

Standard Livable Space
 Optional Livable Space
 Standard Concrete Areas
 Optional Concrete Areas

Go to robson.com for the latest floorplan updates.

Avalon 2,695 sq. ft.

OPTIONS

The Preserve at SaddleBrooke

At The Preserve at SaddleBrooke, you can personalize your home with a variety of options and features.



Opt. Guest Suite



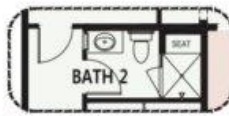
Opt. Bedroom 3 Suite



Opt. Office



Opt. Alternate Master Bath



Opt. Shower w/ Seat



Opt. 16080 Stackable SGD or
Opt. 16090 Stackable SGD

Due to the variety of options allowing you to personalize your home, there may be some options which cannot be combined due to structural limitations. Additional options and room extensions that increase the livable and non-livable, under roof plan square footage may require home buyer(s) to select the optional fire sprinklers as mandated by the municipality. Please see your New Home Consultant for further details.

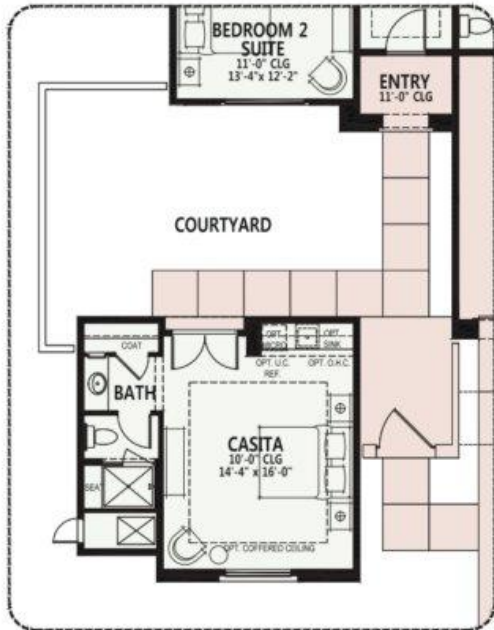
Go to robson.com for the latest floorplan updates.

Avalon 2,695 sq. ft.

OPTIONS

The Preserve at SaddleBrooke

At The Preserve at SaddleBrooke, you can personalize your home with a variety of options and features.



Opt. Detached Casita



Opt. Dog Wash
(at Opt. Expanded Laundry Only)



Opt. Expanded Laundry -
Elevation A and C



Opt. Expanded Laundry -
Elevation D

Due to the variety of options allowing you to personalize your home, there may be some options which cannot be combined due to structural limitations. Additional options and room extensions that increase the livable and non-livable, under roof plan square footage may require home buyer(s) to select the optional fire sprinklers as mandated by the municipality. Please see your New Home Consultant for further details.

Go to robson.com for the latest floorplan updates.