

# Bacara

Floorplan - 8010

The Preserve at SaddleBrooke



Exterior Design A



Exterior Design C

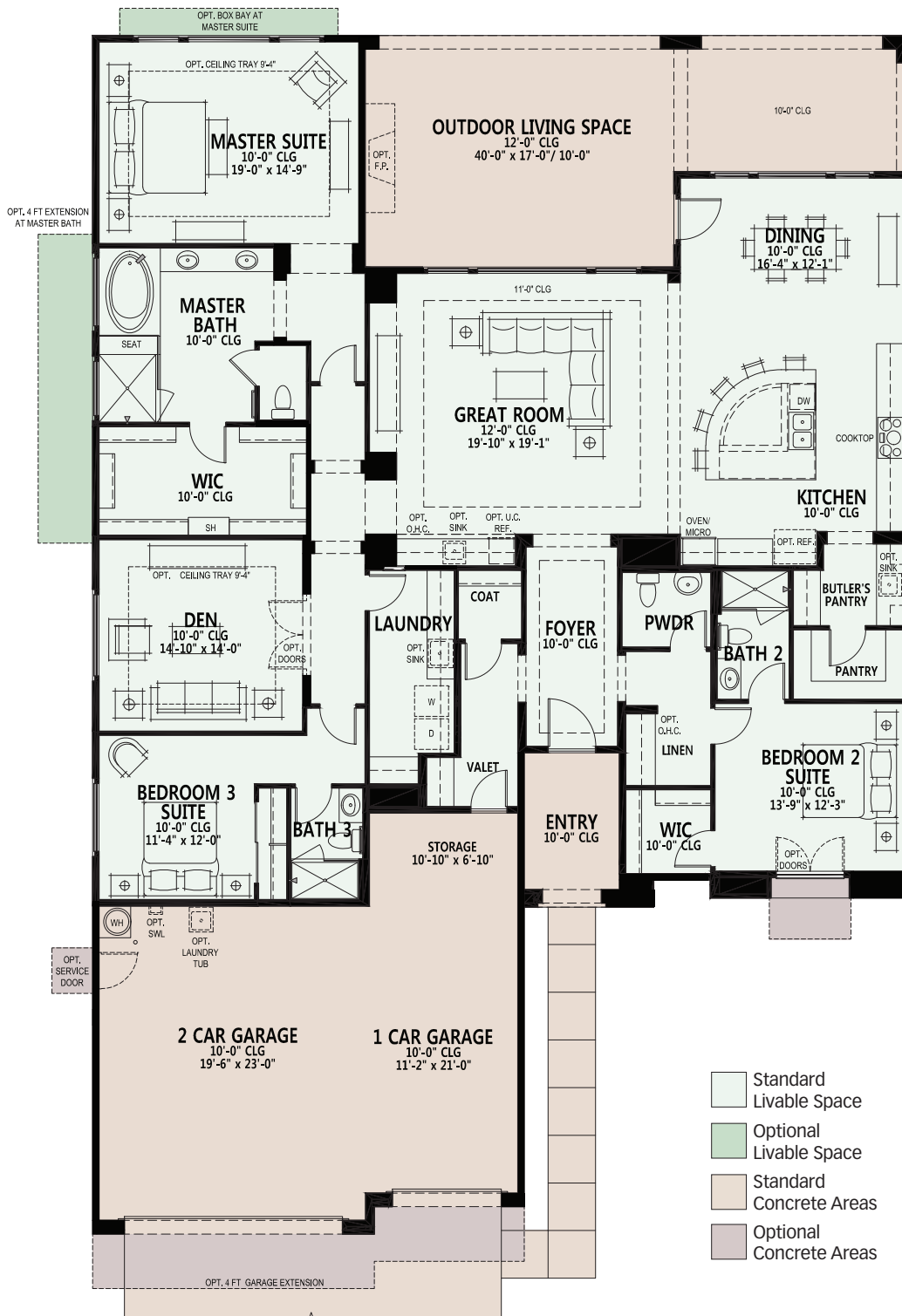


Exterior Design D

# Bacara

Floorplan - 8010

The Preserve at SaddleBrooke



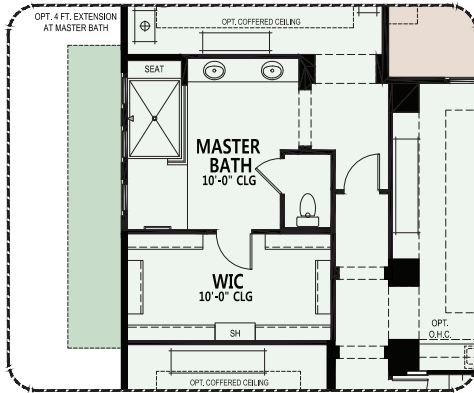
- Master Suite
- Bedroom 2 Suite
- Bedroom 3 Suite
- Great Room
- Den
- 3-1/2 Baths
- 3,077 Sq. Ft.
- 3-Car Garage
- Opt. 4-Car Garage
- Opt. Casita

# Bacara

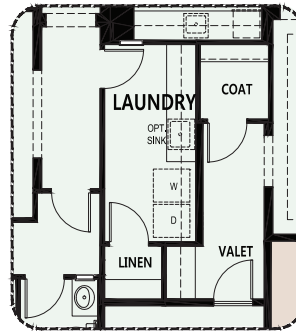
Floorplan - 8010

## OPTIONS

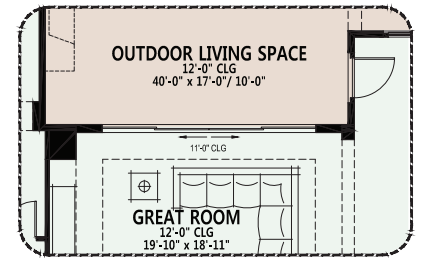
The Preserve at SaddleBrooke



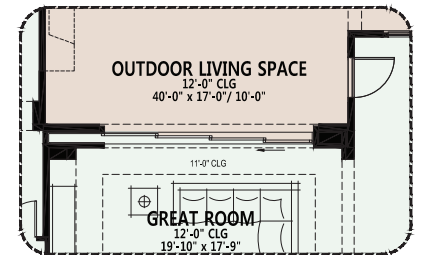
Opt. Curbless Shower



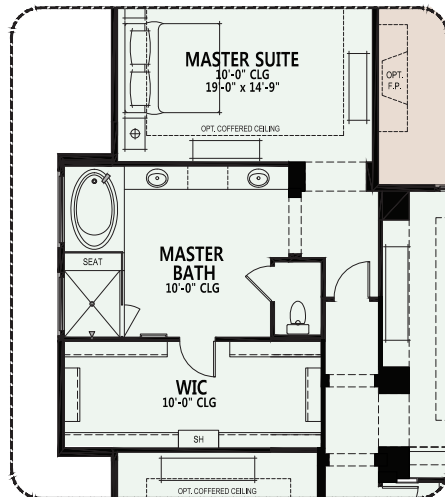
Opt. Linen at Laundry



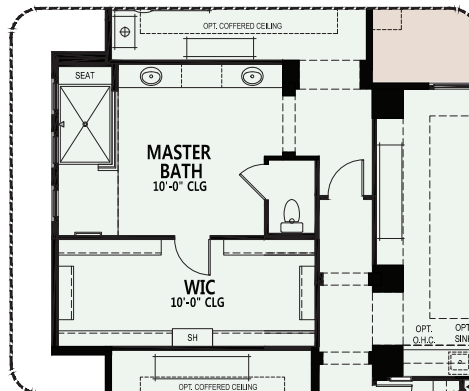
Opt. 16080 SGD



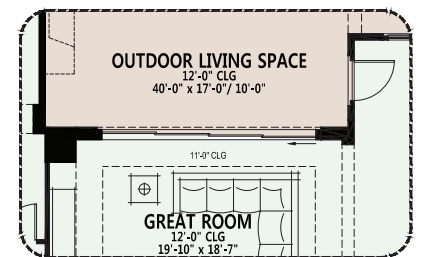
Opt. 160100 Multi-Slide Glass Pocket Door



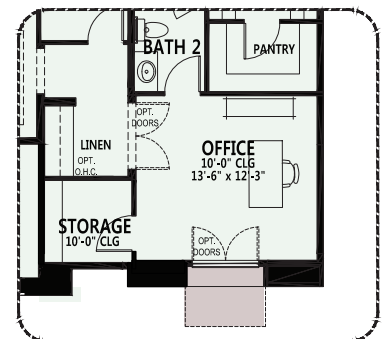
Opt. 4 ft. Extension at Master Bath



Opt. 4 ft. Extension at Master Bath w/ Curbless Shower



Opt. 160100 Stackable SGD



Opt. Office i.l.o. Bedroom 2 Suite

Due to the variety of options allowing you to personalize your home, there may be some options which cannot be combined due to structural limitations. Additional options and room extensions that increase the livable and non-livable, under roof plan square footage may require home buyer(s) to select the optional fire sprinklers as mandated by the municipality. Please see your New Home Consultant for further details.

Standard Livable Space
  Optional Livable Space
  Standard Concrete Areas
  Optional Concrete Areas

Go to [robson.com](http://robson.com) for the latest floorplan updates.

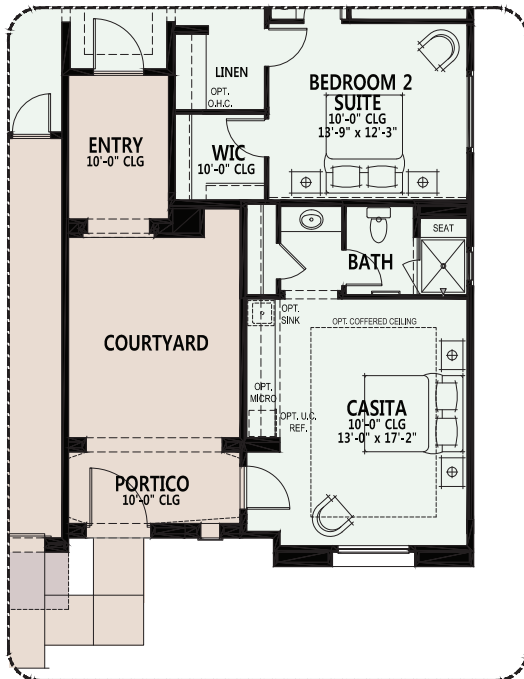
# Bacara

Floorplan - 8010

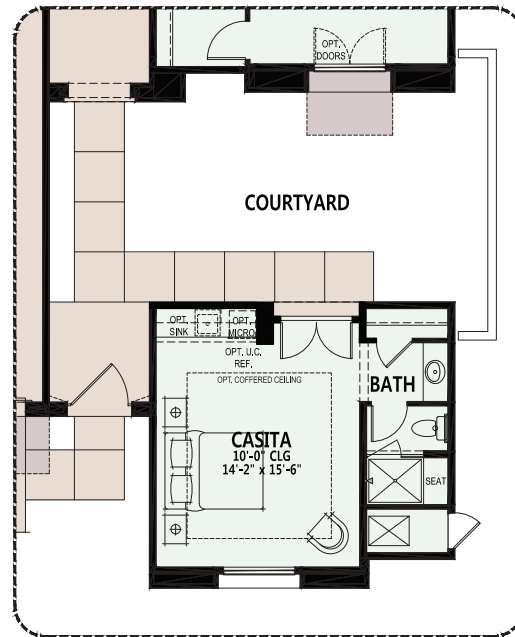
## OPTIONS

The Preserve at SaddleBrooke

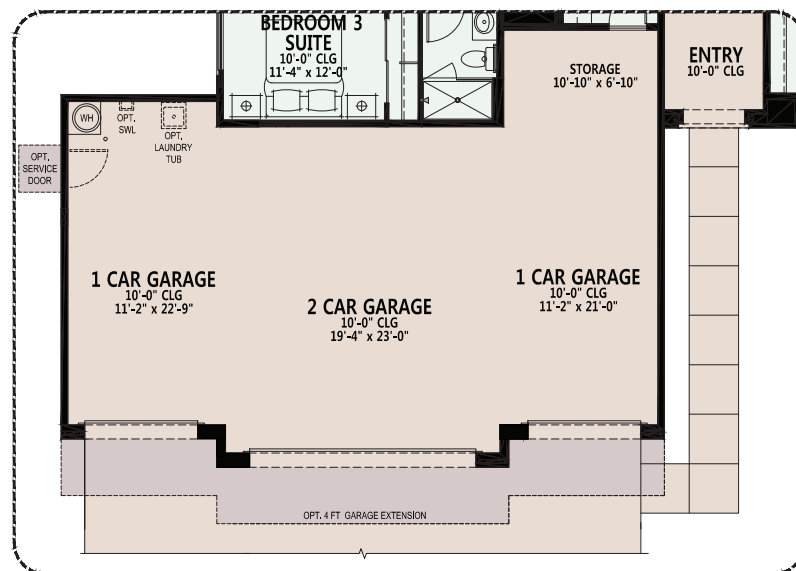
At The Preserve, you can personalize your home with a variety of options and features.



Opt. Attached Casita



Opt. Detached Casita



Opt. 4 Car Garage

Due to the variety of options allowing you to personalize your home, there may be some options which cannot be combined due to structural limitations. Additional options and room extensions that increase the livable and non-livable, under roof plan square footage may require home buyer(s) to select the optional fire sprinklers as mandated by the municipality. Please see your New Home Consultant for further details.

All information is subject to change without notice. We reserve the right to discontinue or change specifications at any time. Promotional materials may show features, options, upgrades or improvements that are only available at an additional cost and that are not included unless specifically provided for in the purchase contract. All dimensions and measurements, including without limitation square footages, ceiling heights and window sizes, styles and locations, are approximate and may vary per elevation and floorplan. Measurements in model homes may vary slightly without incurring any obligation or liability. Actual lot sizes and home measurements will vary. Lot size and actual position of the home on the lot will be determined by the site plan and final plot plan based upon the particular home and lot selected. Interior and/or exterior photos or illustrations of models may have been taken at other Robson Resort Communities®, are artist's conceptions and are not intended to show specific detail for homes at any particular Robson Resort Community™. Many options are available and will vary per floorplan. Due to the variety of options allowing you to personalize your home, there may be some options which cannot be combined due to structural limitations. Please check with your New Home or Design Consultant. Elevation appearance will change with the addition of a guest suite, separate casita, golf cart garage, 2nd story, bay windows or any other applicable structural option/upgrade. Check with your New Home Consultant. The housing at any Robson Resort Community™ is intended for occupancy by at least one person 55 years of age or older per unit, although the occupants of a limited number of dwelling units may be younger. One person must be at least 40 years of age in each unit. No one in permanent residence under 19 years of age. Homes are offered and sold by SaddleBrooke Development Company, owner/agent. SaddleBrooke Construction Company, general contractor, ROC 192901. No offer for sale or lease may be made or accepted prior to buyer's receipt of an Arizona subdivision public report. A public report is available on the state real estate department's website. This material shall not constitute an offer in any state where registration is required or if in violation of law. Effective date 6/1/17. All photos/pictorials are artist's conception.

© 2017 Robson Communities®, Inc. All rights reserved.